



girl scouts
of louisiana
pines to the gulf

2022
SUMMER
CAMP GUIDE

Adventure
IS OUT THERE

Dear Girls,



I hope you are as excited as I am to look through our new camp guide to find out how you can Camp Like a Girl Scout this summer at one of our GSLPG camps. Camp is truly a magical place for girls. It is a wonderful way to make new friends, experience new adventures, and create fun memories that will last a lifetime. From picking a camp name (mine is Dakota!) to learning archery, to campfire singing, you better believe you'll have a blast!

Our terrific (and trained) Volunteer Summer Camp Teams have been working hard to ensure that you will have the most incredible outdoor experience no matter the camp you choose.

If you or your parents are unsure if you're ready for camp, please feel free to reach out and we can discuss finding the best fit. Please know that your overall experience is our number one priority. We are attentive to our campers and monitor things such as sunscreen, hydration, sleep, cleanliness and safety. Please take the time to explore this guide to find the camp that is right for you. The Camp Teams and I look forward to seeing you this summer!

See You Soon,
Darion Lespier
Director of Program

Why Volunteer at GSLPG Summer Camps?

Enjoy a change of scenery!

Do you feel like you are always stuck in an office or driving in your car running errands? Come enjoy the great outdoors and inhale some fresh air.

Unplug devices and re-charge your spirit.

Catch a break from social media and constant email notifications as you spend time in the beauty of nature.

There are no friends like GSLPG Summer Camp friends.

Girl Scouts is the best place to make lifelong friends and to feel a sense of community. When volunteering at a GSLPG summer camp you will meet like-minded women and men who will be there to support and encourage you for years to come.

Be a kid again!

Hiking through the woods! Roasting s'mores over the camp fire! Re-live the fun of summer camp! When you volunteer at a GSLPG summer camp, it's like discovering the fountain of youth! Girl giggles, silly stories, new experiences, and breaking out of your comfort zone will keep you forever young!

Make priceless memories.

Do you have a daughter, granddaughter, niece, or other special girl in your life? We don't need to tell you how fast girls grow up. Camp is a great way to bond with her at this unique moment in time and create memories you'll never forget.

To volunteer, fill out registration with your girl. Otherwise, please contact the appropriate camp director.

WEEKEND CAMP

Disney Adventures

May 27-29

Get ready to experience a world inspired by Disney! Girls will find their inner-princess while engaging in activities such as canoeing, swimming, archery, arts and crafts, and fulfilling STEM requirements. Girls will also be invited to dress up as their favorite Disney character on Saturday night. Lots of FUN, lots of GAMES, and lots of FRIENDSHIPS will be made!

Disney Adventures is open for Daisy - Cadette campers and Senior - Ambassador program aids. Each Daisy camper must be accompanied by one guardian. Troops participating together must have one Troop Volunteer for every 5 girls.

Volunteer adults are welcome.



Camp Director:

Felicia Patton
felicia.patton@aol.com
(318) 272-8034

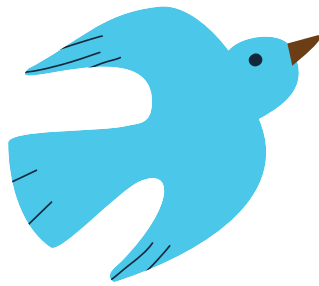
CAMP
WAWBANSEE

Registration Deadline: April 20
Register online at gslpg.org

Check-In	May 27 4:00pm
Check-Out	May 29 1:00pm
Levels	Campers: Daisy - Cadette Program Aids: Senior - Ambassador
Overnight Camp	May 27 - 29
Maximum	80 Campers
Camper Fee	\$80
Program Aide Fee	\$40



CAMP WAWBANSEE



June 5-9

Do you like being in the great outdoors with other girls? Back2Basic7 is a traditional sleepaway camp adventure with specialty activities. B2B7 gives girls an opportunity to grow, explore, and have fun under the guidance of experienced staff. This is your chance to get out, learn new skills, make new friends, and reconnect with old friends!



*Make new friends but keep the old
One is silver and the other is gold*

Camping is a great way for girls to explore leadership, build skills, and develop an appreciation for nature. Campers will explore their spectacular surroundings, learn outdoor skills, and experience camp fires with singing, crafting, swimming, canoeing, fishing, archery, and even cook several meals outdoors. Come join us for the fun!

B2B7 is open to Brownies through Ambassadors. Program Aids will be selected from Cadettes, Seniors, and Ambassadors. Limited enrollment allows for a more personal camp experience that brings all of the camp family together.

No Tagalongs allowed. Potential Program Aids must contact Sharlea Smith before registering. Experience is preferred. Pre-camp training is required. No bus transportation provided.

RESIDENT CAMP

Back2Basics7

Camp Director:

Sharlea Smith
sharlea@suddenlink.net
(318) 245-7153

Registration Deadline: April 20
Register online at gslpg.org

Check-In	June 5 2:00pm
Check-Out	June 9 2:00pm
Levels	Brownie-Ambassador
Overnight Camp	June 5-9
Maximum	40 Campers
Camper Fee	\$150
Program Aide Fee	\$75



RESIDENT CAMP

Creek Girls Can!

Camp Director:

Anna Keith Foy
akfoy@caldwelledu.org
(318) 237-2896

Registration Deadline: April 20

Register online at gslpg.org

Check-In	June 12 3:00pm
Check-Out	June 17 5:30pm
Levels	Brownie-Ambassador
Overnight Camp	June 12-17
Maximum	70 Campers
Camper Fee	\$150
Program Aide Fee	\$75
Adult Fee	\$20

June 12-17

We are strong! We are invincible! We are Girl Scouts!! Join us as Arnold the Armadillo leads us to celebrate the accomplishments of girls and women of all ages. Along with the traditional camp activities like swimming, archery, canoeing, crafts, and more, you will learn about how girls and women have changed the world. Mama Bear, Frog, Belle, and all the rest are ready to challenge you to become the best you can be!



CAMP
WAWBANSEE

RESIDENT CAMP

Wizard Camp

Camp Director:

Jennifer Avie
summercampfun106@gmail.com
(318) 272-6849

Registration Deadline: April 20

Register online at gslpg.org

Check-In	June 21 2:00pm
Check-Out	June 25 2:00pm
Levels	Brownie-Ambassador
Overnight Camp	June 21-25
Maximum	48 Campers
Camper Fee	\$150
Adult Fee	\$50



June 21-25

Join your fellow Girl Scout Sisters for an exciting adventure at Wizard Camp!!! We can't wait to welcome back past wizard campers and new wizard campers that want to join us for the first time. We have 5 fun filled exciting days planned for camp and hope the girls make many new friendships along the way.

Wizard Campers will be sorted into one of four Hogwarts Houses then learn potions, duel with wands, learn spells, and play Quidditch! They will also enjoy all the camp favorites of swimming, canoeing and archery.

No Talagongs or bus transportation.

CAMP BON TEMPS

WEEKEND CAMP

Basic Survival

Camp Director:

Catina Theriot
gemini_dancer2004@yahoo.com
(337) 230-3870

Registration Deadline: April 20
Register online at gslpg.org

Check-In	June 2 4:00pm
Check-Out	June 5 9:00am
Levels	Daisy-Ambassador
Day Camp	June 2-5
Maximum	60 Campers
Camper Fee	\$80
Program Aid Fee	\$50
Tagalong Fee	\$25
Adult Fee	\$15

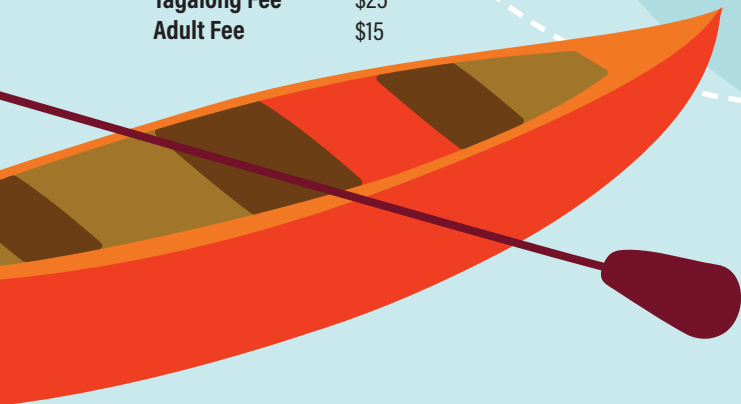
June 2-5

Girls will have an opportunity to grow, explore, have fun, get out, learn new skills, make new friends, and reconnect with old friends. Camping is a great way for girls to explore leadership, build skills, and develop an appreciation for nature. Campers will explore their surroundings, learn outdoor skills, and experience camp fires with singing, crafting, swimming, canoeing, fishing, and archery and even get the opportunity to camp in a tent while they cook their own meal outdoors!

Troops bringing more than 4 girls must have 1 adult stay the entire weekend. Girls might not be placed with their representative adults or volunteers. We require each camper to have an adult volunteer at least one day during camp.

Tagalongs accepted (toddler girls, preferably potty trained) for \$25 each **only if a parent volunteers for the whole weekend.**

Program aids must have completed the 5th grade, attended camp before, and will be required to complete Mandatory Program Aid training, which will be provided prior to camp. Please contact Catina Theriot for the training date. No bus transportation.



DAY CAMP

Cajun Camp

Camp Director:

Jennifer Macha
jennjomacha76@gmail.com
(337) 654-6890

Registration Deadline: April 20
Register online at gslpg.org

Check-In	8:30am Daily
Check-Out	3:30pm Daily
Levels	Daisy-Ambassador
Day Camp	June 6-10
Maximum	80 campers
Camper Fee	\$80
Program Aide Fee	\$50

June 6-10

Get ready to immerse yourself in the rich and unique culture that South Louisiana embodies! You'll dance and sing, swim and canoe, and create artwork that shows off our Cajun heritage. We are lucky to have several local artisans making appearances at camp to share their skills with our Girl Scouts!

Girls entering 8th grade can sign up as Program Aides. Volunteers will not be placed with their children. No bus transportation. No tagalongs.



DAY CAMP BYMP

Camp Director:

Christina Broussard
kris1108@cox.net
(337) 298-6085

Registration Deadline: April 20
Register online at gslpg.org

Check-In	9:00am Daily
Check-Out	4:00pm Daily
Levels	Daisy-Ambassador
Day Camp	June 13-17
Maximum	80 Campers
Camper Fee	\$125
Program Aide Fee	\$63
Tagalong Fee	\$30

June 13-17

Come follow Alice down the rabbit hole and Through the Looking Glass and share her adventures in Wonderland! Campers will discover their inner selves and develop a strong sense of self confidence exploring different activities, and work on building new friendships through team building. There will be hands-on science projects, arts and crafts, canoeing, archery, and perhaps lawn croquet...but be on the lookout for the **Red Queen!**



Important Tidbits

How to Register

Register for your favorite summer camp by visiting the Summer Camp or Event Calendar page at www.GSLPG.org. Registration can be paid with a Credit/Debit card or Cookie Dough.

Financial Assistance

Limited financial assistance is available for any girl attending camp. Assistance provided covers a portion of the camp fee. Financial assistance can be requested within the registration form.

Refund Policy

No refunds on camp fees will be given except in the case of a family emergency or illness. Notice of family emergency must be provided in writing at least 10 days prior to the camp start date. In case of illness, a doctor's note must be provided within two weeks after the camp start date. Fifty percent of the camp fee will be refunded in these cases, as camp teams will have made non-refundable purchases by this time.



girl scouts
of louisiana
pines to the gulf

1720 Kaliste Saloom Rd, Suite C1
Lafayette, LA 70508-6140



A special thank you to our corporate sponsors
who help make these camps possible:

GOLD LEVEL SPONSOR



SILVER LEVEL SPONSOR

