



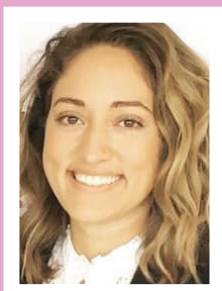
girl scouts
of louisiana
pines to the gulf

ADVENTURE is out there

2019 Summer
Camp Guide



A Letter from GSLPG:



Dear Girls,
I hope you are as excited as I am to look through our new camp guide to find out how you can Camp Like a G.I.R.L this summer at one of our GSLPG camps. Camp is truly a magical place for girls. It is a wonderful way to make new friends, experience new adventures, and create fun memories that will last

a lifetime. From picking a camp name (mine is Dakota!) to learning archery, to campfire singing, you better believe you'll have a blast! Our terrific (and trained) Volunteer Summer Camp Teams have been working hard to ensure that you will

have the most incredible outdoor experience no matter the camp you choose.

If you or your parents are unsure if you're ready for camp, please feel free to reach out and we can discuss finding the best fit. Please know that your overall experience is our number one priority. We are attentive to our campers and monitor things such as sunscreen, hydration, sleep, cleanliness and safety. Please take the time to explore this guide to find the camp that is right for you. The Camp Teams and I look forward to seeing you this summer!

Yours in Girl Scouting,
Darion 'Dani' Lespier
Director of Program & Property

Why Volunteer at GSLPG Summer Camps?



Enjoy a change of scenery!

Do you feel like you are always stuck in an office or driving in your car running errands? Come enjoy the great outdoors and inhale some fresh air.



Unplug devices and re-charge your spirit

Catch a break from social media and constant email notifications as you spend time in the beauty of nature.



There are no friends like GSLPG Summer Camp friends

Girl Scouts is the best place to make lifelong friends and to feel a sense of community. When volunteering at a GSLPG summer camp you will meet like-minded women and men who will be there to support and encourage you for years to come.



Be a kid again!

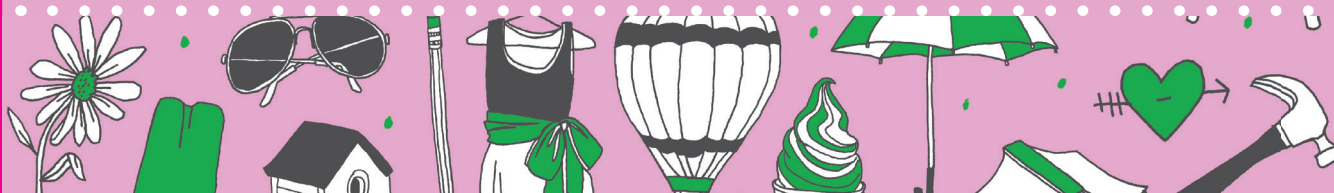
Hiking through the woods! Roasting s'mores over the camp fire! Re-live the fun of summer camp! When you volunteer at a GSLPG summer camp, it's like discovering the fountain of youth! Girl giggles, silly stories, new experiences, and breaking out of your comfort zone will keep you forever young!



Make priceless memories

Do you have a daughter, granddaughter, niece, or other special girl in your life? We don't need to tell you how fast girls grow up. It's a great way to bond with her at this unique moment in time and create memories you'll never forget.

To volunteer, fill out the link included in your girl's camp confirmation email which will follow registering for a camp. Otherwise, please contact the appropriate camp director.





Back2Basics5 2nd-7th

Camp Wawbansee

Disconnect and plug into nature! At Camp Wawbansee your daughter will experience the traditions of summer camp. Juliette Low encouraged girls to get outside and explore. At B2B5 we continue that tradition of providing a quality camp experience that allows your Girl Scout to follow in the footsteps of generations before. **No Tagalongs allowed. Potential Camp Aides must contact Sharlea Smith before registering. Experience is preferred. No bus transportation provided.**

Registration Deadline: May 19

Register online at gslpg.org

Levels: Brownie - Cadette

Overnight Camp - June 2-6

Check-In: 2:00 p.m.

Check-Out: 2:00 p.m.

Maximum: 40 campers

Minimum: 25 campers

Camper Fee: \$130

Program Aide Fee: \$95

{Entering 8th Grade}

Camp Director:

Sharlea Smith

sharlea@suddenlink.net

318-245-7153



Camp Girlsports K-12th

Camp Wawbansee

Explore the exciting world of sports and fun ways to fuel an active body! This 3-day camp features recreational and competitive sports for all ages and skill levels, including everything from high energy sports like ultimate frisbee and soccer, to relaxing activities like yoga and hiking! Healthy snacking, a fun water bottle, and t-shirt are included!

Bus transportation provided for a fee of \$15. Girl Scouts who have completed the 6th grade have the opportunity to help at camp as Program Aides. A brief training will be provided the day prior to camp start date. No Tagalongs allowed.

Calling Adult Volunteers: WE NEED YOU to make this program a success! Our camp is run by amazing parents who believe in the skills that Girl Scout camps teach. You play an integral role in this camp, from facilitating activities to helping units or in the kitchen. Watch these girls grow in this unique experience!

Registration Deadline: June 4

Register online at gslpg.org

Levels: Daisy-Ambassador

Day Camp - June 24-26

Check-In: 9:00 a.m.

Check-Out: 4:00 p.m.

Maximum: 75 campers

Minimum: 25 campers

Camper Fee: \$50

Program Aide Fee: \$30

{Entering 7th Grade}

Camp Director:

Alyssa Heistuman

info@gslpg.org

318-868-7322



Camp Wawbansee

Camp Wawbansee

Creek Elements - Daisy Style K-1st Camp Wawbansee

We invite our Daisy friends to join us for a 2-day, 2-night Daisy camp. All Daisies must be accompanied by an adult female chaperone. Camp price is for one adult and one girl. One adult may bring two Daisies. Join Arnold the Armadillo as we explore the original elements: Earth, Air, Fire, and Water. You will enjoy hiking, archery, s'mores, swimming and more, while learning to live by the Girl Scout Law!! It's a great introduction to the world of summer camp!! **No Tagalongs allowed. No bus transportation provided.**

Registration Deadline: May 18

Register online at gslpg.org

Levels: Daisy

Overnight Camp - June 9-11

Check-In: 3:00 p.m.

Check-Out: 6:00 p.m.

Maximum: 12 campers

Minimum: 6 campers

Camper Fee: \$120

Camp Director:

Anna Keith Foy

icsummercamp@hotmail.com

318-512-1602



Creek Elements 2nd-12th Camp Wawbansee

Join Arnold the Armadillo as he leads us in exploring the original elements: Earth, Air, Fire, and Water. We will hike, learn archery, make s'mores, and swim while learning how to live by the Girl Scout Law. Traditional favorite activities like canoeing, crafts, and Nutty Professor will be included along with campfires, singing, and service projects. Make new friends but keep the old. One is silver and the other gold. **No Tagalongs allowed. No bus transportation provided. Program Aides must have completed 7th grade AND have camp experience. Aides must attend training on June 8.**

Registration Deadline: May 18

Register online at gslpg.org

Levels: Brownie-Ambassador

Overnight Camp: June 9-14

Check-In: 3:00 p.m.

Check-Out: 6:30 p.m.

Maximum: 64 campers

Minimum: 40 campers

Camper Fee: \$150

Program Aide Fee: \$75

{Entering 8th Grade}

Camp Director:

Anna Keith Foy

icsummercamp@hotmail.com

318-512-1602

Wizard Camp 2nd-12th Camp Wawbansee

Come join us for an exciting adventure at Wizard Camp! Get sorted into one of the four houses of Hogwarts, learn potions, how to duel, play Quidditch, and so much more!

Program aids MUST be entering 8th grade or older AND must have attended 2 previous summer camps. Aids will be required to attend camp training on June 2nd. No Tagalongs allowed. No bus transportation provided.

**Registration Deadline: May 24**

Register online at gslpg.org

Levels: Brownie-Ambassador

Day Camp: June 28 - July 3

Check-In: 3:00 p.m.

Check-Out: 11:00 a.m.

Maximum: 50 campers

Minimum: 25 campers

Camper Fee: \$150

Program Aide Fee: \$90

{Entering 8th Grade}

Camp Director:

Jessica McCullough

jb3asl3y@gmail.com

318-780-1751

Camp Spy School K-12th

Camp Bon Temps

Ever wondered what it would be like to be a detective? Come find out at Spy School! Girls will solve mysteries, explore basic CSI crime solving techniques, learn secret codes, and track clues in search of the camp spirit stick. In addition to our themed activities, girls will canoe and do archery, as well as enjoy daily swimming and arts and crafts. Although badge work is not the focus of our camp, each camper will work on a particular badge for the week and other badges that she can finish with her troop at home. We require each camper to have an adult volunteer at least one day during camp. **Tagalongs accepted for \$25 each only if a parent volunteers for the whole week. Bus transportation provided for a fee of \$15.**



Registration Deadline: May 3

Register online at gslpg.org

Levels: Daisy-Ambassador

Day Camp - June 3 - 7

Check-In: 8:30 a.m.

Check-Out: 3:30 p.m.

Maximum: 100 campers

Minimum: 50 campers

Camper Fee: \$60

Program Aide Fee: \$35

{Entering 7th Grade}

Camp Director:

Jennifer Macha

jennjomacha76@gmail.com

337-654-6890



S.O.A. (Summer Overnight Adventure) K-12th

Camp Bon Temps

Formerly Cal Camp. This adventurous camp will include, canoeing, archery, swimming, and crafts. Daisies through Ambassadors are welcome to attend! Deadline to register is May 10. Each troop represented must have at least one adult present EVERY day and night of camp. Troops bringing more than 4 girls must have 2 adults. Girls might not be placed with their represented adults or volunteers during the day and night. All meals will be provided. **No Tagalongs allowed. Program aides must have completed the 6th Grade and must have attended camp before. Program Aide training will be June 12 - June 13. No bus transportation provided.**

Registration Deadline: May 10

Register online at gslpg.org

Levels: Daisy-Ambassador

Overnight Camp: June 13-16

Check-In: 4:00 p.m.

Check-Out: 9:00 a.m.

Maximum: 45 campers

Minimum: 15 campers

Camper Fee: \$65

Program Aide Fee: \$45

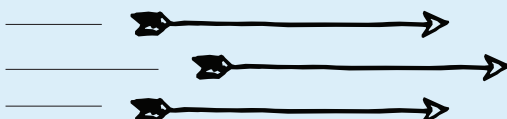
{Entering 7th Grade}

Camp Director:

Catina Theriot

gemini_dancer2004@yahoo.com

337-230-3870



Camp Bon Temps

Camp Bon Temps

Where In The World? K-12

Camp Bon Temps

Come join BYMP as we travel across the world and explore the different countries where the 5 Girl Scout World Centers are located. The girls will explore different cultures as they earn different stamps on their passports as we cross the different countries. The week will be filled with crafts, swimming, archery, fishing, canoeing, and exploring the world around us. We hope you can take this journey with us!

Taglalongs accepted at \$35 each. Bus transportation provided for a fee of \$15. Deadline to register to guarantee camp shirt is May 31. Any registrations received after the May 31 will not be guaranteed a camp t-shirt and will be subject to a \$15.00 late fee.

Registration Deadline: May 31

\$15 Late Registration Deadline: June 14

Register online at gslpg.org

Levels: Daisy-Ambassador

Day Camp - June 24-28

Check-In: 9:00 a.m.

Check-Out: 4:00 p.m.

Maximum: 130 campers

Minimum: 30 campers

Camper Fee: \$80

Program Aide Fee: \$40

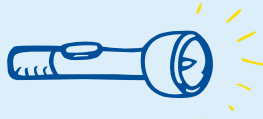
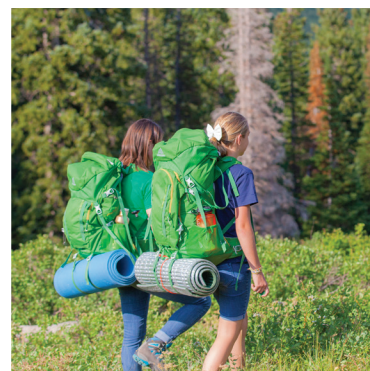
{Entering 7th Grade}

Camp Director:

Samantha Rushlow

rushlowsf@gmail.com

337-288-2239





High Adventure Camp 6th-12th

Woodworth Environmental Center
661 Robinson Bridge Rd.
Woodworth, La 71485

Are you ready for an exciting time at camp this summer?! At High Adventure Camp, you'll get to zip line, complete an obstacle course, canoe, and so much more! If getting out of your comfort zone sounds fun, then this is the camp for you! Adult volunteers are essential to help ensure an exciting and safe week for the girls. Interested adults please contact the camp director. **No Tagalongs allowed. No bus transportation provided.**

Registration Deadline: May 30

Register online at gslpg.org

Levels: Cadette-Ambassador

Overnight Camp: June 17-21

Check-In: 3:00 p.m.

Check-Out: 3:00 p.m.

Maximum: 20 campers

Minimum: 40 campers

Camper Fee: \$150

Camp Director:

Mallory Miller

info@gslpg.org

337-497-0791



Important Tidbits

How to Register:

This year GSLPG will offer many ways to register for your favorite Summer Camp. Please DO NOT SEND Registrations to the Camp Directors.

- Online with a credit or debit card through our website gslpg.org/camp
- Paper registration from Summer Camp tab on our website with payment in the mail to our Lafayette Service Center.
- In Person at either our Shreveport or Lafayette Service Centers
- Using Cookie Dough earned during the 2018 or 2019 Cookie Program – Request Form is available on the Summer Camp tab on our website.

Refund Policy:

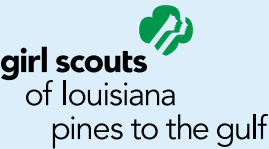
No refunds on camp fees will be given except in the case of a family emergency or illness.

Financial Assistance:

Limited financial assistance is available for any girl attending camp. Assistance provided covers a portion of the camp fee. An application form is located on the councils website gslpg.org/camp. The deadline to apply is April 26th. Email the form to info@gslpg.org.

Lafayette

Girl Scouts of Louisiana - Pines to the Gulf
1720 Kaliste Saloom Rd, Suite C1
Lafayette, LA 70508-6140



Care Packages



Let your Girl Scout know how much fun she’s going to have at camp by sending her an exclusive camp care package! Choose from two different packages which include some of your camping essentials. Mark her experience with these items she won’t be able to forget.

PRE-ORDERS Required! Place your order when registering for camp.

.....

Basic Package

- Drawstring Tote
- GSLPG Custom Water Bottle
- GSLPG Custom Sunglasses
- GSLPG LED Flashlight

\$20

Premium Package

- Drawstring Tote
- GSLPG Custom Water Bottle
- GSLPG Custom Sunglasses
- GSLPG LED Flashlight
- GSLPG Athletic Visor
- Camp Friends Beach Towel

\$35